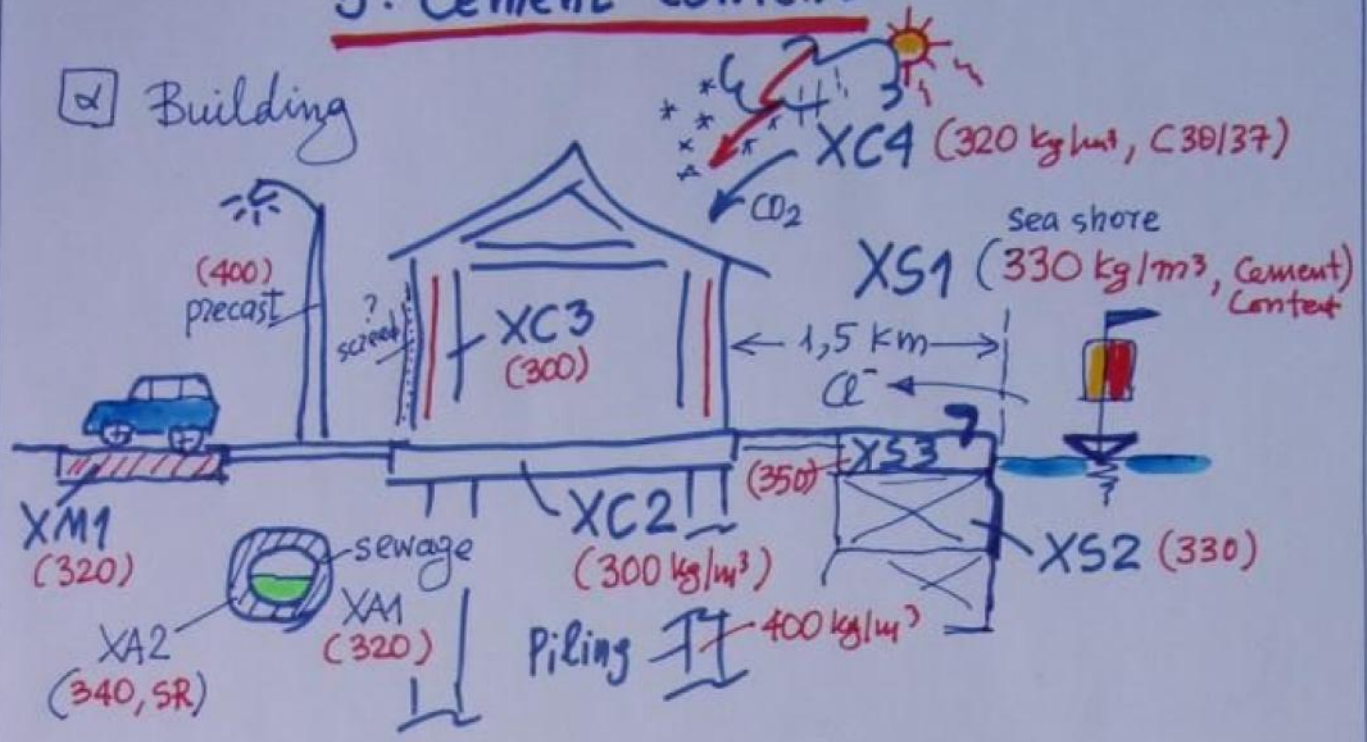
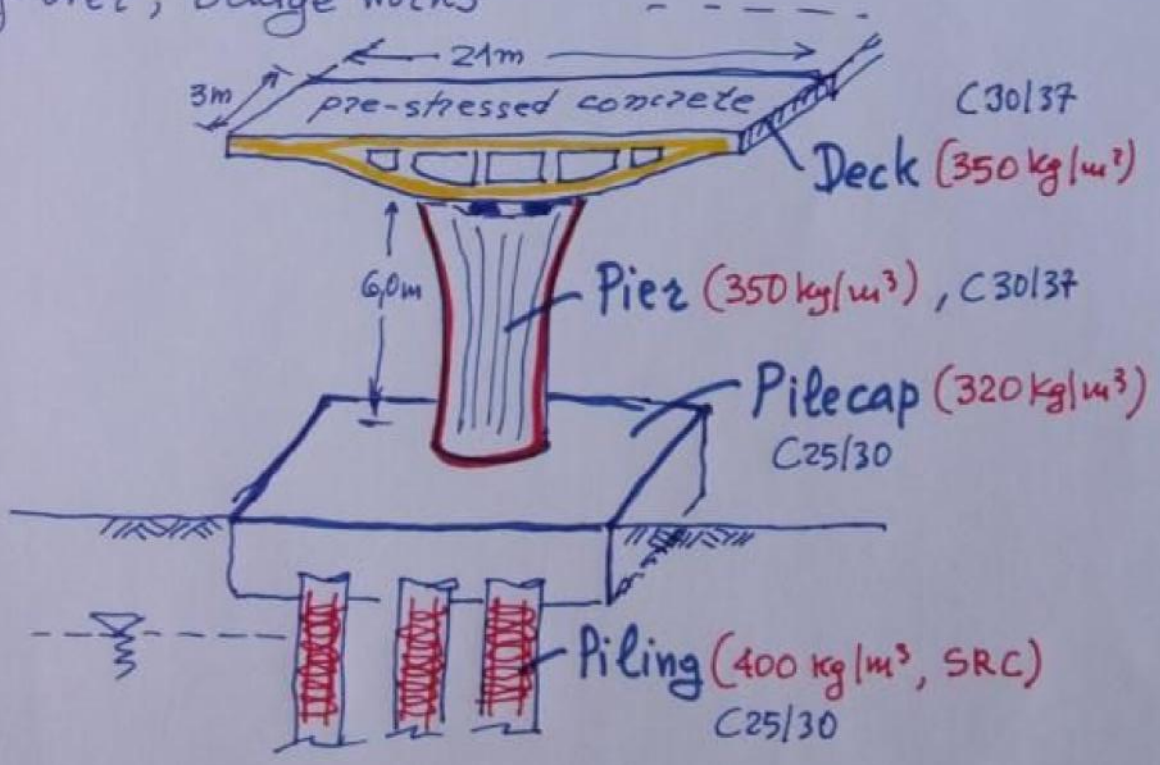


# 5. Cement content

## α Building



## β Fly-over, Bridge works



γ If : minimum cement content, for max agg. size,  $31,5 = 300 \text{ kg/m}^3$   
 than the minimum com. cont, for agg. size:  $16 \text{ mm} = 330 \text{ kg/m}^3 + 30 \text{ kg/m}^3$