

23-02-2023

1. Conceptual formulation → Goal  
problematic situation to solve ... to improve

2. Logframe Analysis Approach  
Stakeholder A.  
Problem / Objective A.  
↳ Strategy A.

3. Intervention

hierarchy ↓  
OO overall objective  
OC outcome / Purpose  
OP output / RESULTS

4. Monitoring KDI  
KPI

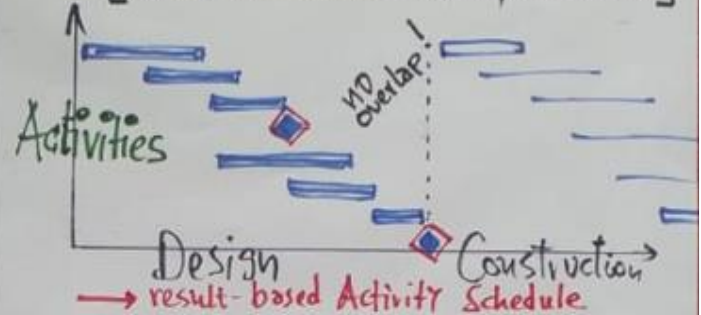
Interventions by  
OO, OC, OP  
↳ OVI *objectively Verifiable Indicators*  
MSoV *means & source of Verifications*  
Assumptions / Risks

5. Logframe Matrix

| Interventions | OVI | MSoV | A+R |
|---------------|-----|------|-----|
| OO            | —   | —    | —   |
| OC            | —   | —    | —   |
| OP / Results  | —   | —    | —   |

6. Transform Results in ACTIVITIES

[Time Resources Cost, recurrent]



7. Resources / Schedule

- physical: HR, Mat, Equipment, Fuel
  - non-physical means: \$\$\$
  - Services [outsourced]: —
- result-based Resource-Schedule

8. Cost, Finances, Exp  
per Unit

- to design + build *Single Cost.*
- to operate *recurrent*
- to maintain (periodical, emergency)

9. Internal assessment

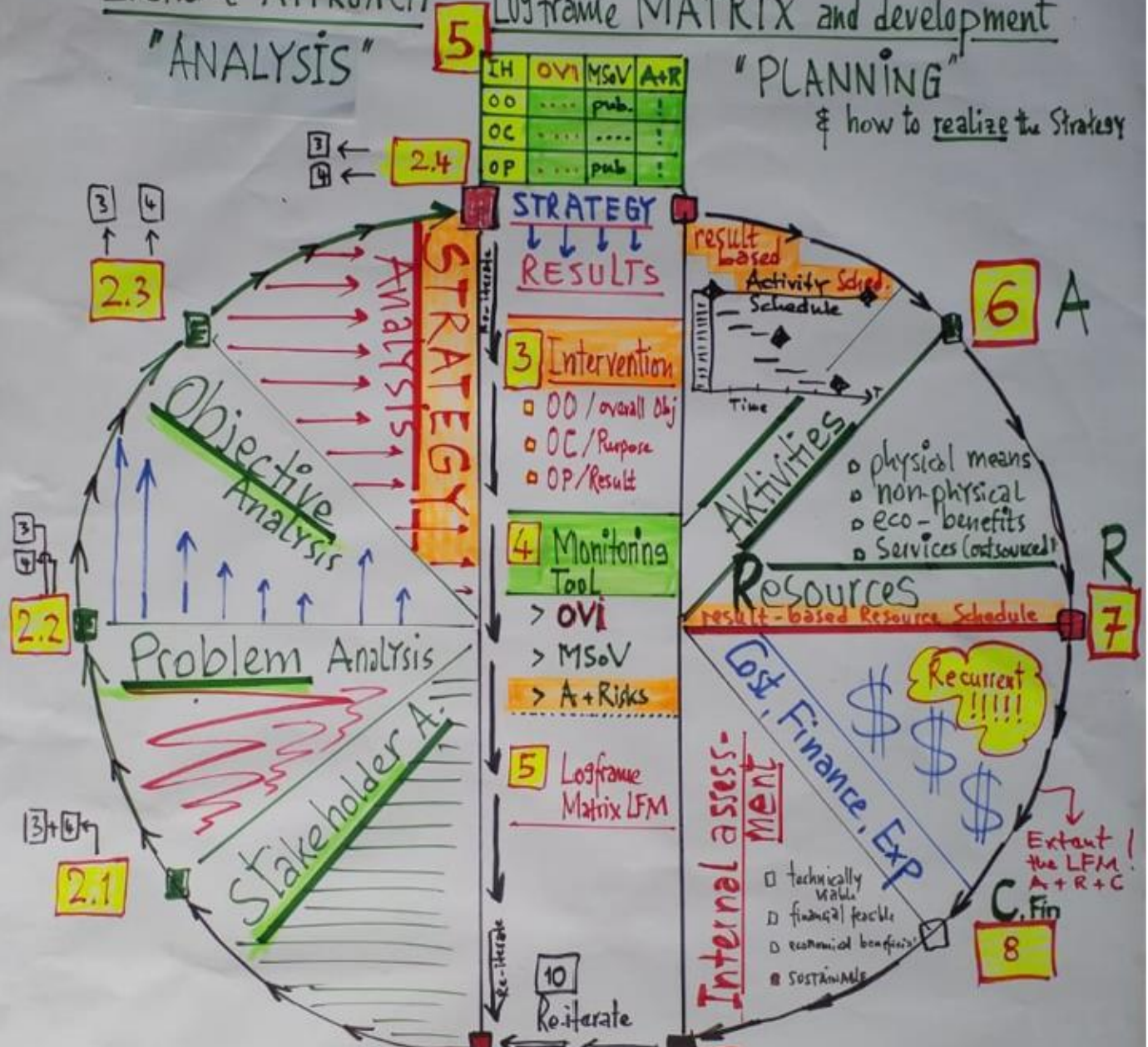
- technically, environmental, climate... *viable*
- financially *feasible*
- economically *beneficial* Benefit > Costs
- sustainable → if no....

10. Reiterate the procedure

# Logframe APPROACH "ANALYSIS"

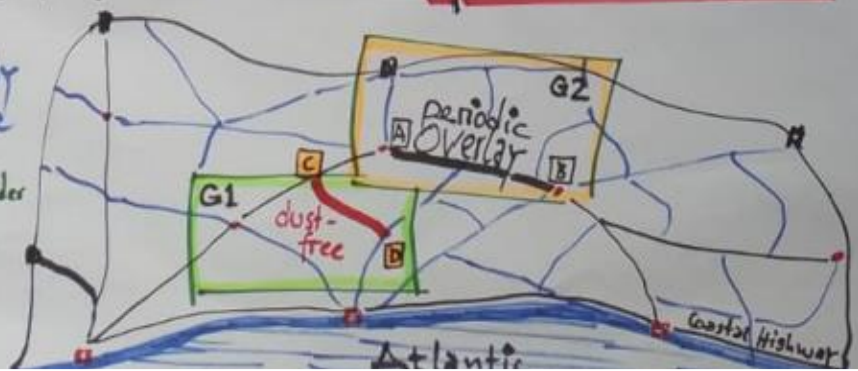
# Logframe MATRIX and development "PLANNING"

& how to realize the Strategy



1 Goal 1,2,3  
 conceptual formulation, problematic situation

Network  
 - Connectivity to improve political adm. Border



23 Feb 2023